

Lease

FEATURES

- Heavy power
- Cranes
- Easy access to all major routes
- I-G zoning
- Freestanding building with yard
- Ideal for fabrication

Harvey Aronovich
403-560-2059
harvey@target-realty.com

Mike Blayney
403-969-7355
mike@target-realty.com

Target Realty Corp.
134, 6170 - 12th Street SE
Calgary, Alberta T2H 2X2
Phone: 403.253.3060
Fax: 403.253.3221
info@target-realty.com



Property Information

Building Size	18,720 sq. ft.
Office	3,600 sq. ft.
Shop	15,120 sq. ft. (63' x 240')
Ceiling height	24' (under hook)
Cranes	1– 7 ton
Loading	3 Drive-in doors 20' x 20', 18' x 18', 24' x 24'
Power	1,000 amp main (TBV) 3 phase, 208 volt
Occupancy	June 1 st 2010
Lease Rate	\$11.00 psf
Op Costs	\$ 2.30 psf (est.)

www.target-realty.com

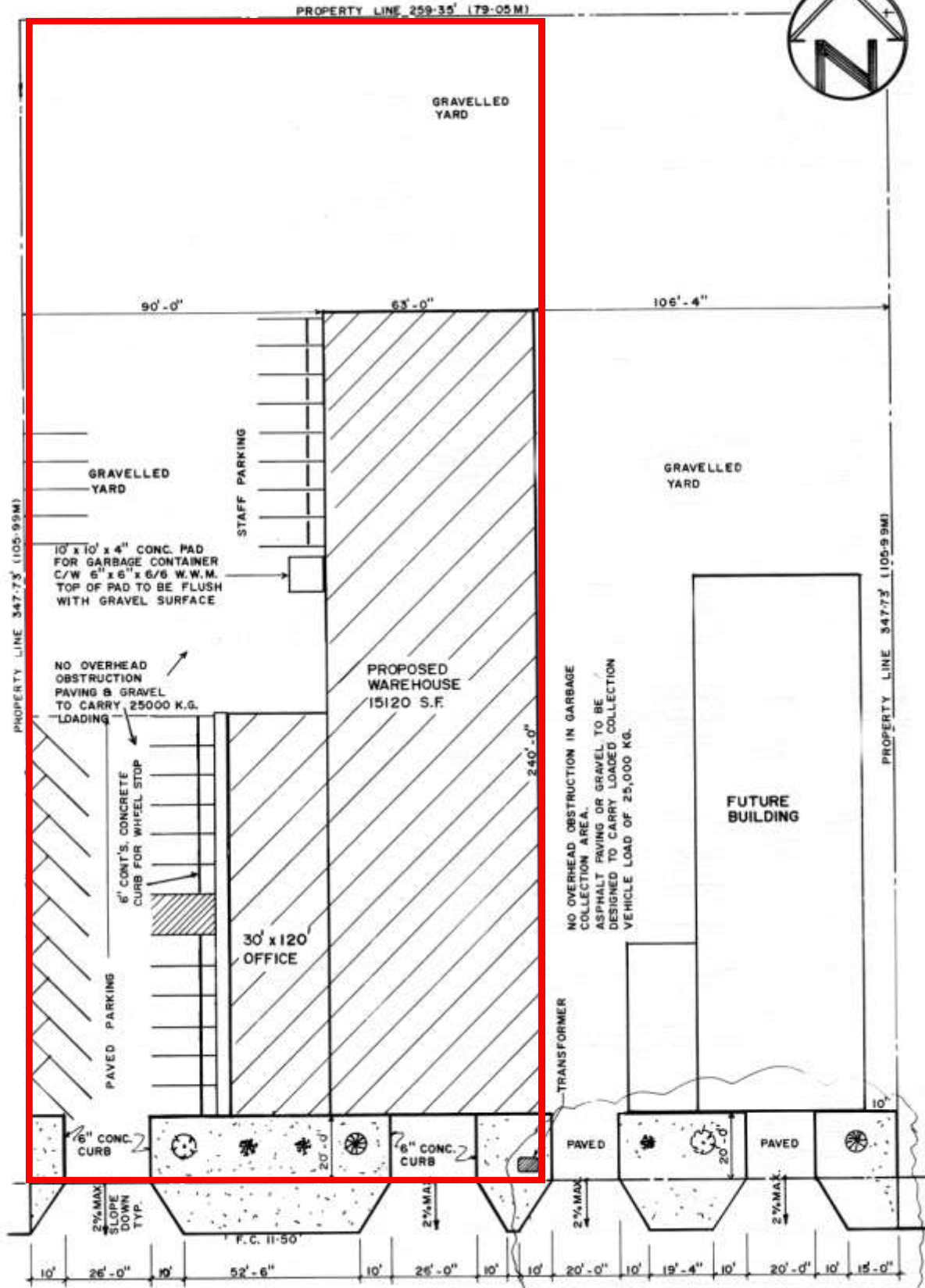


Copyright The City of Calgary 2014. All rights reserved. Use of this map requires your agreement to the Terms of Use.





target
realty corp.™



74 AVENUE S.E.

FUTURE DEVELOPMENT