



FEATURES

- 2 minutes from Barlow Trail and Deerfoot Trail SE
- New pre-engineered metal building in Eastlake Industrial Park
- Mezzanine option
- Secure fenced yard
- Industrial General (I-G) District

Kenyon Chipman
403-301-7729
kenyon@target-realty.com

Target Realty Corp.
134, 6170 - 12th Street SE
Calgary, Alberta T2H 2X2
Phone: 403.253.3060
Fax: 403.253.3221
info@target-realty.com

Property Information

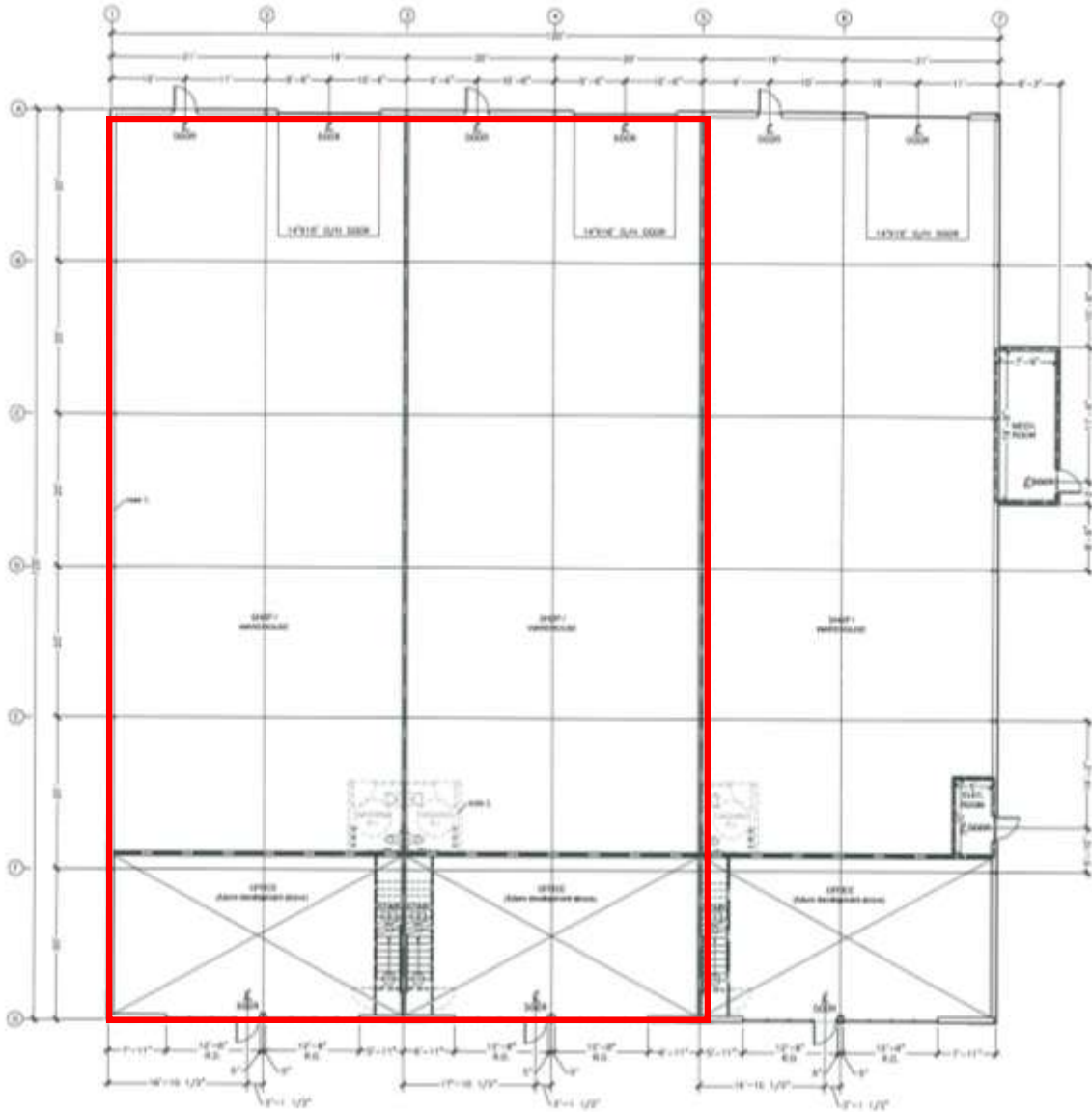
Address	4430 - 112 Avenue SE
Building Size	14,400 sq. ft.
Rentable Area	9,600 sq. ft. (2 bays of 4,800 sq. ft. ea.)
Loading	2- 14' x 16' O/H drive-in doors
Ceiling Height	22' clear
Electrical	200 amp, 208 volt to each bay
Lease Rate	\$12.00 psf
Op Costs	TBD
Project Completion	Summer 2010

www.target-realty.com



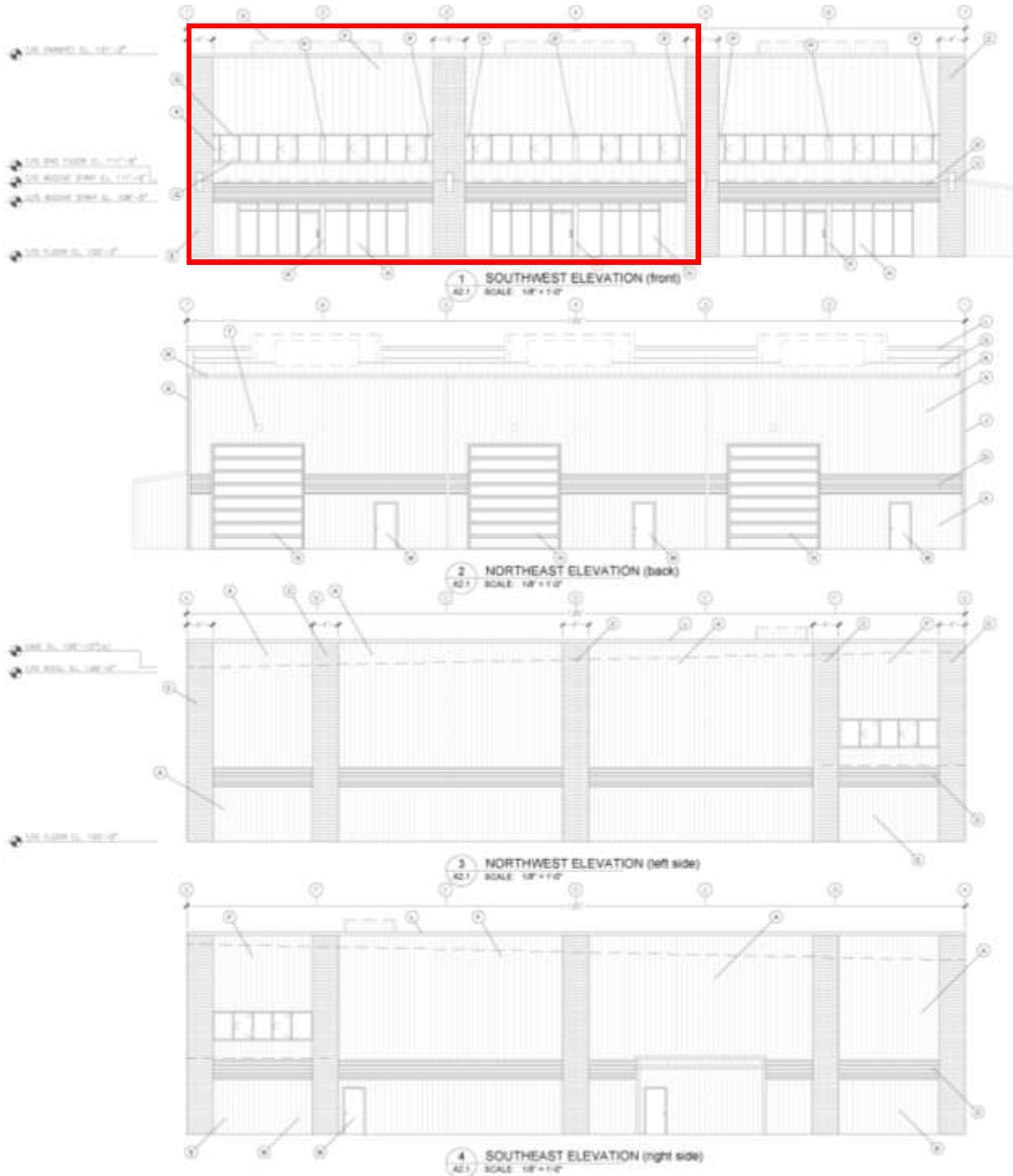
target
realty corp.™

Commercial Real Estate Services



ELEVATIONS

PROPOSED BUILDING





target
realty corp.™

Commercial Real Estate Services

